

---

**From:** Steve Cassulo <Steven.Cassulo@WasteConnections.com>  
**Sent:** Friday, May 31, 2024 7:53 PM  
**To:** Baitong Chen  
**Cc:** Nicole Ward; Sullivan, Pat; Lizabeth Gomez; Nathaniel Dickel  
**Subject:** RE: An updated waste-in-place map  
**Attachments:** C-801 Liner Limits.pdf

[EXTERNAL SENDER: Use caution with links/attachments]

---

Chris,

Attached is an updated waste-in-place map for the facility. Please let us know if you have any questions.

Regards,

Steve Cassulo  
District Manager  
661-371-9214

**From:** Baitong Chen <BChen@aqmd.gov>  
**Sent:** Friday, May 10, 2024 12:16 PM  
**To:** Steve Cassulo <Steven.Cassulo@WasteConnections.com>  
**Cc:** Nicole Ward <nicole.ward@wasteconnections.com>; Sullivan, Pat <PSullivan@SCSEngineers.com>; Lizabeth Gomez <LGomez@aqmd.gov>; Nathaniel Dickel <NDickel@aqmd.gov>  
**Subject:** An updated waste-in-place map

Hello Steve,

I wanted to follow up the discussion in the bi-weekly meeting earlier today. We understand the facility is still looking into the waste-in-place issue associated with the area near the flare station. Could you please provide an updated waste-in-place plan/map for the facility by May 31, 2024?

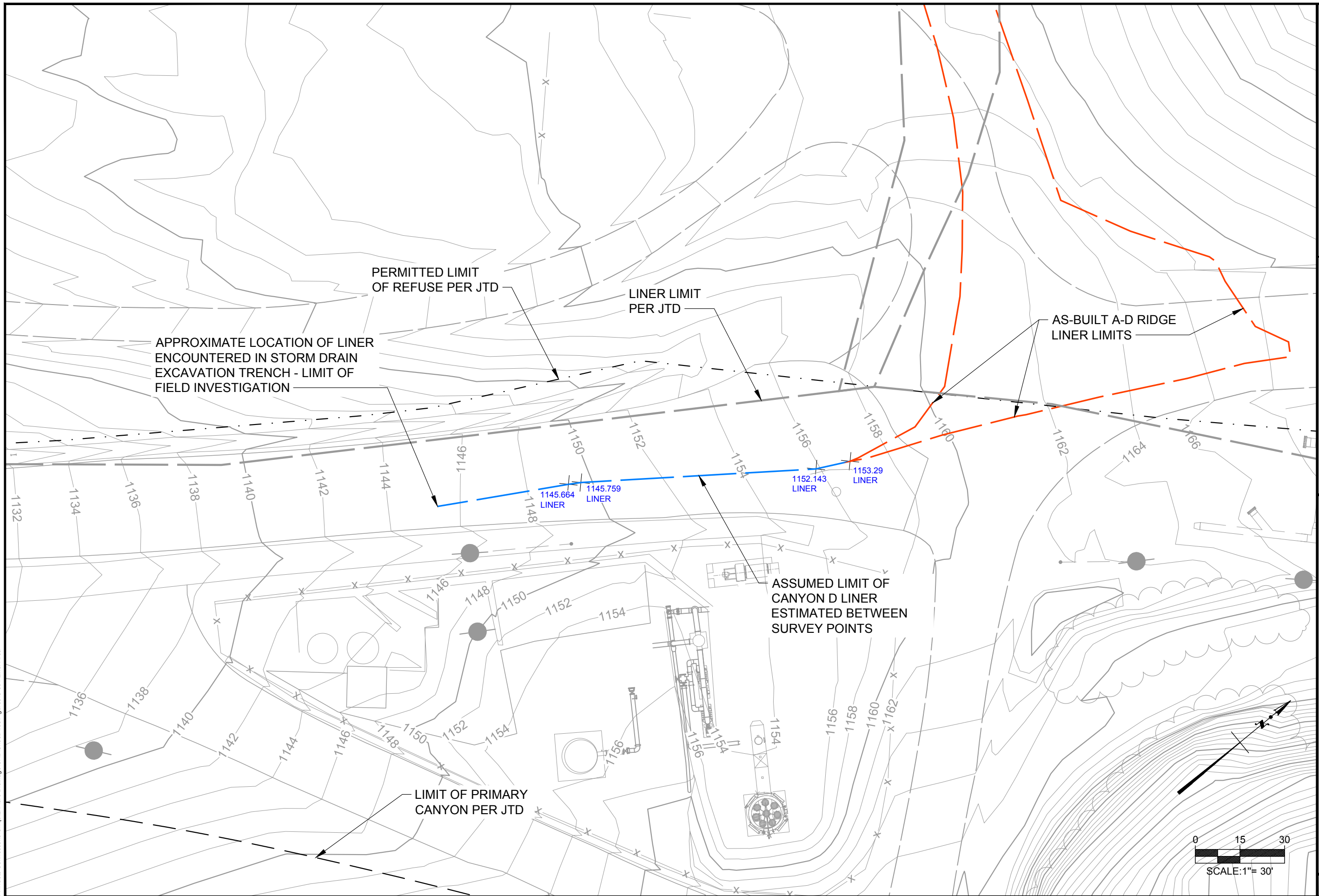
Please let me know if additional time is required to investigate this issue.

Thanks  
Chris



**Baitong (Chris) Chen, PhD** | Air Quality Engineer |  
South Coast Air Quality Management District | [www.aqmd.gov](http://www.aqmd.gov)  
21865 Copley Drive | Diamond Bar, CA 91765  
Phone: (909) 396-2607  
[BChen@aqmd.gov](mailto:BChen@aqmd.gov)

P:\Waste Connections\Chiquita Flare Drainage\CAD\SheetFiles\Figures\C-801 Liner Area



DESIGNED BY: -	DATE: 05-31-2024
DRAWN BY: ANP	PROJ. NO.: 0000-0000
CHECKED BY: JMH	
APPROVED BY: -	

CHIQUITA CANYON LANDFILL

**LINER LIMITS**

FIGURE 1